



KA Sail Australia a division of Kingston Range Pty Ltd

ABN 39053749116

Unit 11, 91-95 Tulip Street Cheltenham 3192 Victoria, Australia
phone: +61 3 9585 3585 email: office@kasail.com

WASZP upgrades

In July 2016 we launched the first production WASZP in Lake Garda, Italy. Since then over 500 WASZPs have found their way to mostly very happy owners. I say mostly because some of our early production boats were not up to the standard we had hoped. We aim to change this through the upgrades listed below.

At various stages during the last 16 months we have changed the specification of some parts. We now have released 6 upgrade packs to bring all boats up to the standard of the current production and make the boat the absolute joy we want everyone to experience.

Not all boats need the same packs, so please read this document before ordering the parts, then select the items you need on our web shop:

<https://www.kasail.com/waszp/product/Upgrades>

Upgrade parts and shipping are free, **you can also add any other part from the web shop to the cart with free shipping** for parts under 2m length.

We are ready to send out most parts now, see rollout schedule on page 15.

Andrew McDougall, December 2017



Gantry Bolts

Boats # affected: Various

Boats already upgraded: ~100

Severity: **Critical**

Pack to choose: **1 (Gantry Fixings kit)**

If your Gantry bolts only measure 25 mm (excluding the head) there is a possibility they are not reaching the stainless-steel tapping plate inside the boat and are only being screwed into composite. If this is the case, eventually they will pull out causing gantry failure and possibly damage to your boat. Not to mention difficulty getting the boat back to the beach. We are providing 35mm bolts which may be too long to go into the hole. In this case we strongly recommend you clean out any glue in the hole and if necessarily drill the backing out (with a 5mm drill) so that the screw can go to full depth. If you pierce the backing cover, this is not a problem as it is best to put something like silicon or Sikaflex (291 is what we use) inside the hole when you screw the gantry in.





Wing Tube Sleeves

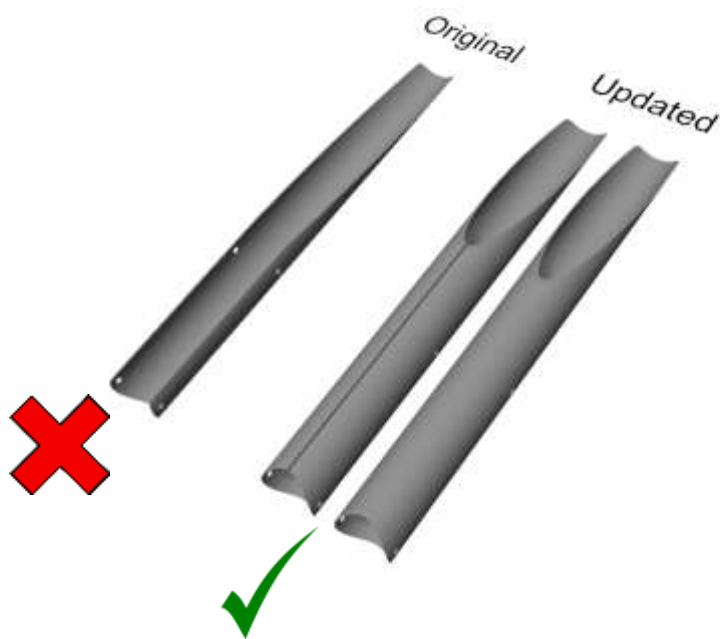
Boats # affected: 2000 to ~2300

of Boats already upgraded: ~60

Severity: **High**

Pack to choose: **3 (Sleeve kit)**

The original sleeves strengthening the front and rear wing bars only wrapped 70% the way around the wing bar. We found that under high hiking loads the sleeve could crack allowing the wing bar to bend or even fail. We have developed new wing sleeves which fully wrap or have a small slot. If you have the original with the 70% coverage please choose the upgrade. Please also check if any of your main wing tubes are bent. If so select the tubes you need from the main webstore and select 'Submit to KA' on checkout so that we can adjust the price to zero.





Bolt Rope Track

Boats # affected: 2000 to ~2420

of Boats already upgraded: ~60

Severity: **High** (2000 to ~2160), **Low** (2160 to 2420)

Pack # to choose **6 (Tramp Bolt Rope Track fixing kit)**

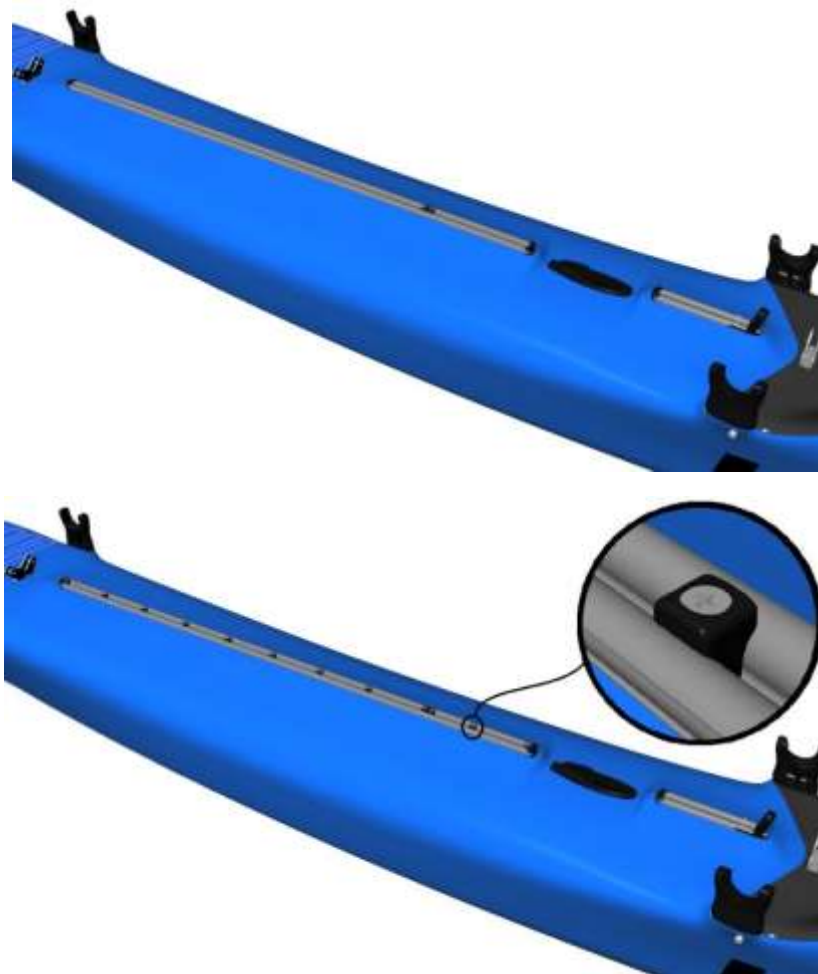
In early boats (pre ~2160) this bolt rope track was not bedded down on a raft of Plexus glue. This allowed the track to move and possibly break the M3 bolts holding it down.

The solution is to upgrade bolts to 4mm with a plastic insert to spread the load on the bolt.

What to do:

- If your boat # is higher than 2160, it is only a precaution. No action is OK.
- Install the new bolts and inserts yourself and receive a \$50 credit on our web store (or with local agent) – see video [Bolt Track Upgrade](#). Tools are provided in the kit but you will need a cordless drill with Phillips #1 and #2 screw driver bits.
- If you are not comfortable with doing it and your boat # is below 2160, please get a quote to get it done for you and submit a warranty claim:

<https://www.kasail.com/mach2/incident/log-incident>





Ride Height Adjuster Update

Boats # affected: (2000 to ~2100)

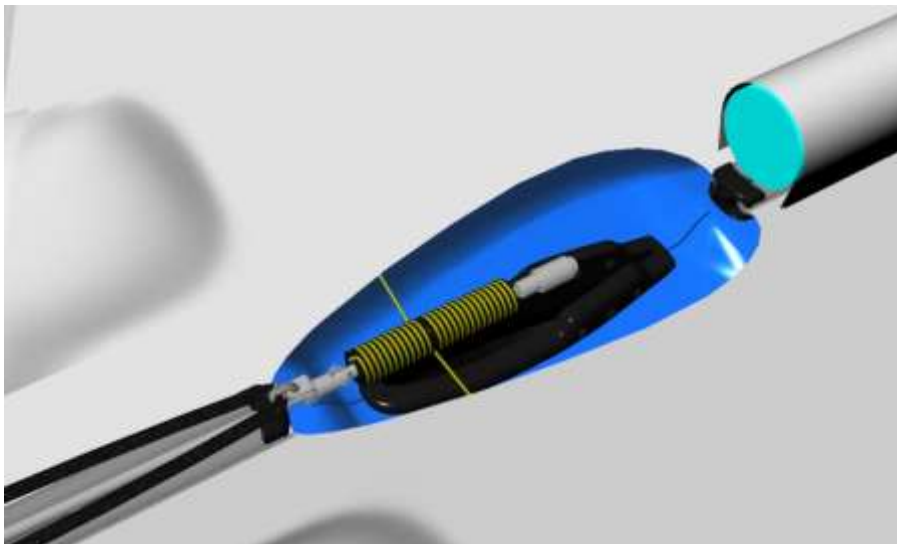
Boats already upgraded: ~50

Severity: **Low**

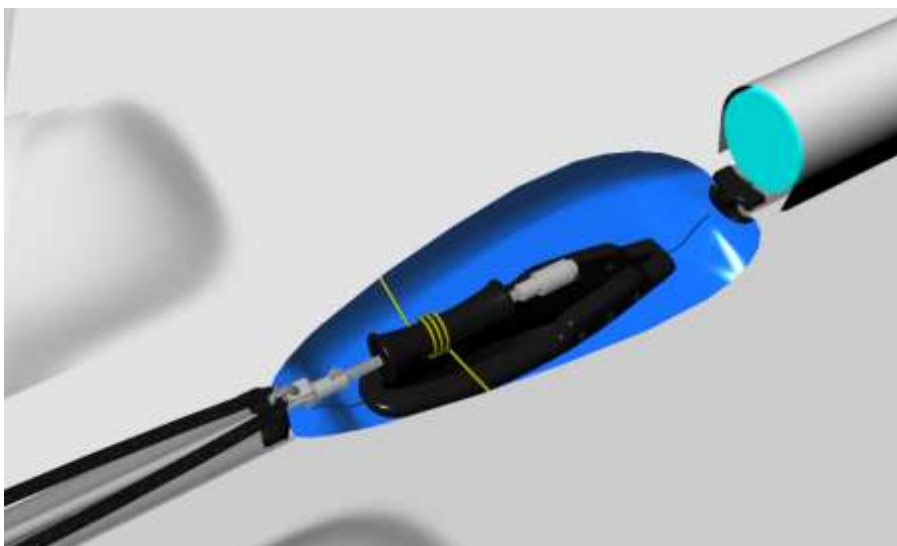
Pack # to choose: **2 (Ride Height control upgrade)**

The first item that started to fail was the original ride height adjuster. Initially we re-engineered the part with a single internal bush rather than the split one which could have the right height adjuster to breaking in half. In tandem with this we decided to completely redesign the right height adjuster to make it much easier to use forming a more inverted barrel shape. So: - if you have the ride height adjuster as shown in this photo we can send you the new style. Some people actually prefer the old style as it gives you a better visual feedback of where your right height is. Personally, I like the new one as it is less likely to tangle than the old one. See video [RHA_V2](#)

If it has not broken you may want to keep with it, even so we can still send you the upgraded version



Ride Height Adjuster Barrel V1



Ride Height Adjuster Barrel V2



Ride Height Adjuster Update

Boats # affected: ~2280 to ~2230

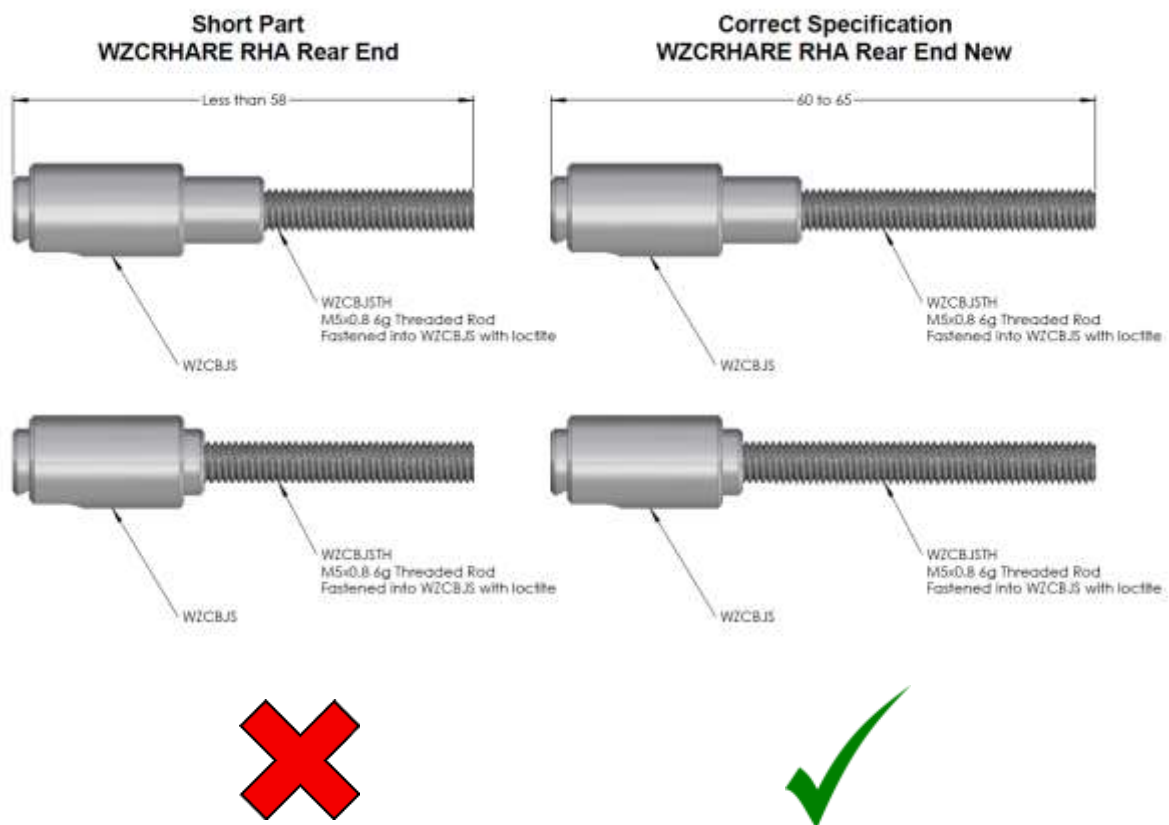
Boats already upgraded: ~20

Severity: **Medium**

Pack # to choose: **4 (Ride Height Adjuster connector update)**

The new ride height adjuster created another problem: some were provided with the ball joint socket (shown here) being too short and there was not enough range in the right height adjuster (sometimes resulting in losing the right height adjuster barrel). If the total length of the supplied RHRE part is less than (<) **60 mm**, please select the new RHA Connector pack to extend this part to the correct length.

Note there are two types of socket heads, both are OK.





Adjustable Push Rod

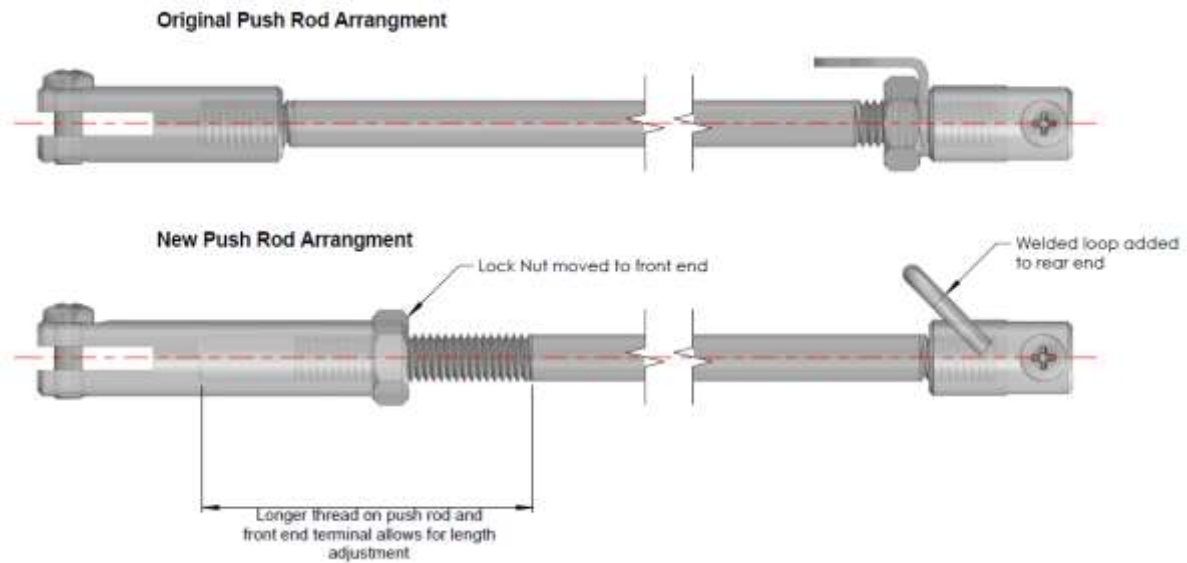
Boats # affected: 2001 to ~2420

Boats already upgraded approx. ~60

Severity: **Medium**

Pack # to choose: **5 (Push Rod Upgrade)**

We found that there were variations in the boat and parts, enough to cause the wand to not to be able to actuate the flat in the correct range, making the boat difficult to control. To get around this issue we have a new push rod and ends, which allows for full adjustment to get the setup right. See Video [Push Rod Upgrade](#)





Wand Control Link

Boats # affected: 2000 to ~2420

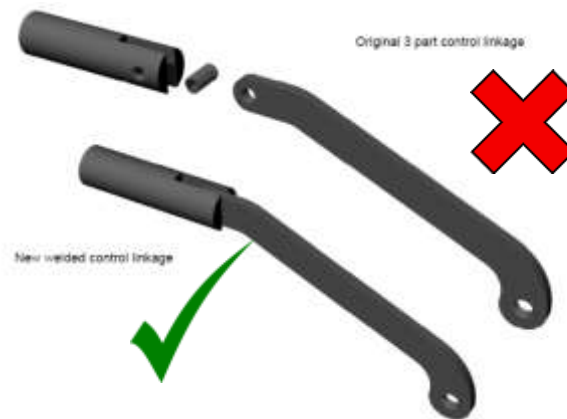
Boats already upgraded: ~80

Severity: **High**

Pack # to choose: **2** (May also need Control Slider Casing - WZCWCS)

There have been issues with a grub screw joining the wand link to the slider just behind the wand. This could come out and cause the wand to be restricted and causing control problems. It also can dislodge the slider casing from the boat. The new slider has a welded pin that cannot cause any problems.

See video [Pullrod System Upgrade](#) for instructions on how to replace.



Please check that your slider casing is still securely glued in place: Add it to your order if not.



Gearing Setting

Boats # affected: 2000 to ~2350

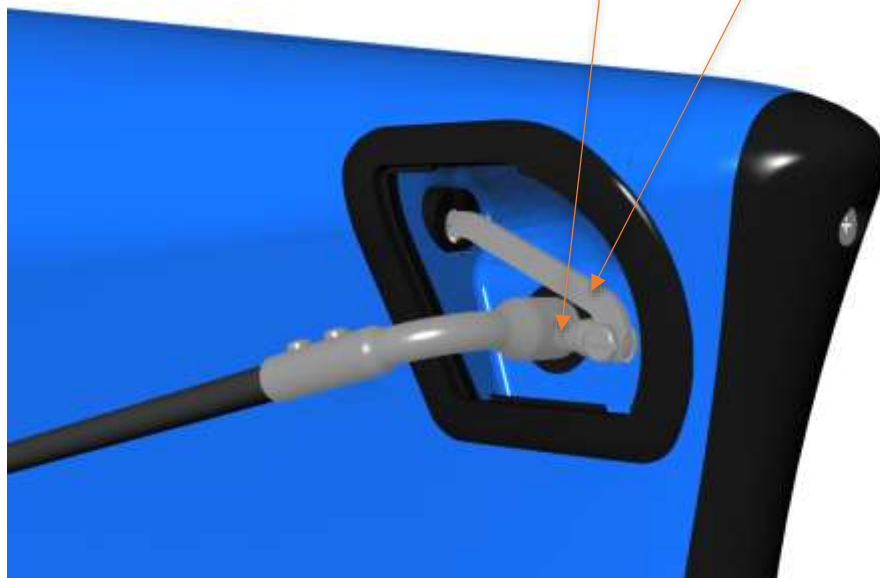
Boats already upgraded: N/A

Severity: **High**

Pack # to choose: N/A set up configuration only.

Some of the problems have been due to the factory gearing setting wound out too far, stressing the system. Please reset this to a maximum of 4 turns out (This was listed as 8 turns in earlier instructions). As you get more skilled wind the adjustor in to almost 0 turns, unless you're sailing in extreme wave conditions.

I also want to talk about how to attach the gearing adjuster to the wand link. As the two halves of the fork on the adjustor and the wand link all are threaded, it is important to pull the wand link outwards until the link is against the inside of the fork on the adjustor. This is so that the fixing screw picks up the thread in the wand link plate immediately the screw emerges from the outer half of the fork, before pushing it to the other side.



If the link is jammed on one side it can cause the wand not being able to extend forwards. Note that both parts have a thread which has allowed us to make the components small and tough but do require a little bit of thought when assembling. See video [Pullrod System Upgrade](#).



Wand Limiter

Boats # affected: 2000 to ~2450

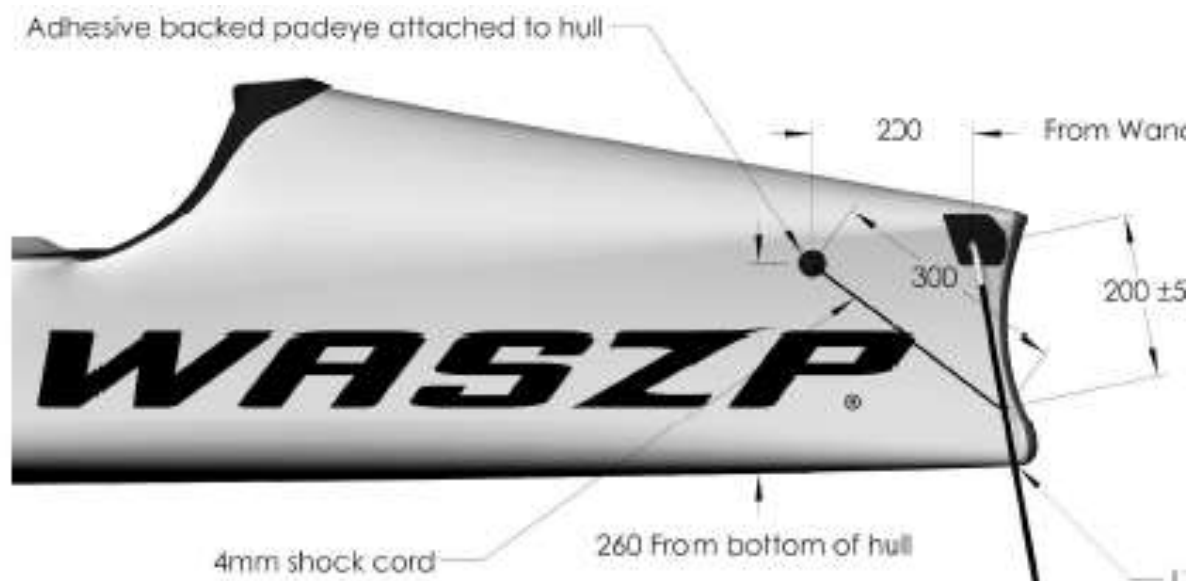
Boats already upgraded: N/A

Severity: **Low**

Pack # to choose: Included in pack **1**

With all the tweaks we are doing, the wand should flick forward easily, which is great for waves and strong winds, but not so great at other times. We have included the tether and bungy. The limiter allows you to adjust the flick by sliding the bungy along the wand shaft.

See video [Push Rod Upgrade](#) and for placement see below:





Bell Crank Axle working out

Boat #'s affected: (2000 to ~2400)

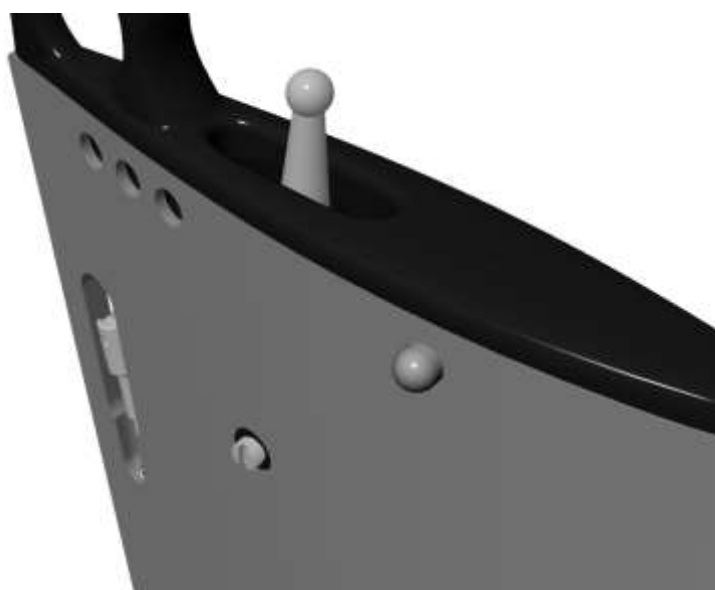
Boats already upgraded: approx.60

Severity: **High**

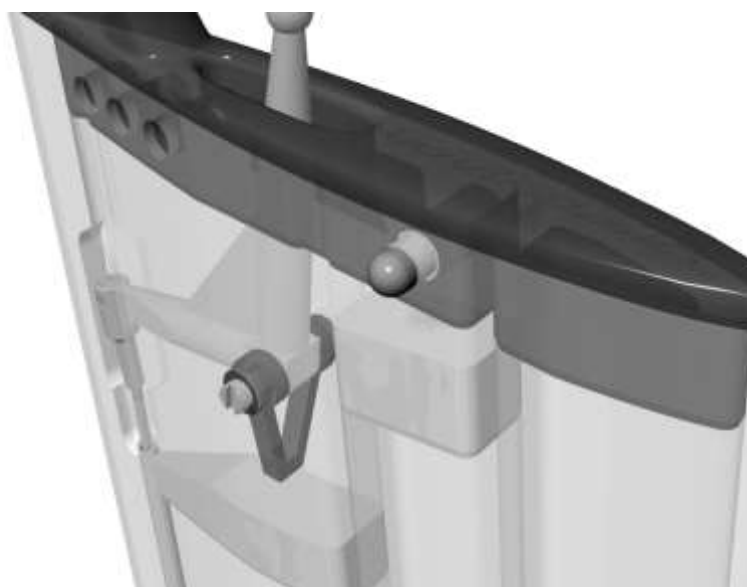
Pack # to choose: **N/A** (But may need WZFFBCW Bell Crank Axle Washer)

It is possible that the Bell Crank Axle could work out causing poor operation of the flap and also difficulty getting the foil out of the case. We have now changed the Loctite specification that is used to 680 - a high strength Loctite specifically designed for plastics. A reasonable solution is to use superglue if you discover the Bell Crank Axle is loose. If you find that the thread has been stripped in the plastic that the Bell Crank Axle sits in, please select this in the webshop with your upgrade pack.

See video [Bell Crank Axle Fix](#) for instructions.



Bell crank axle working out of the front vertical foil





Lost / Damaged grub screw in foil push rod top terminator

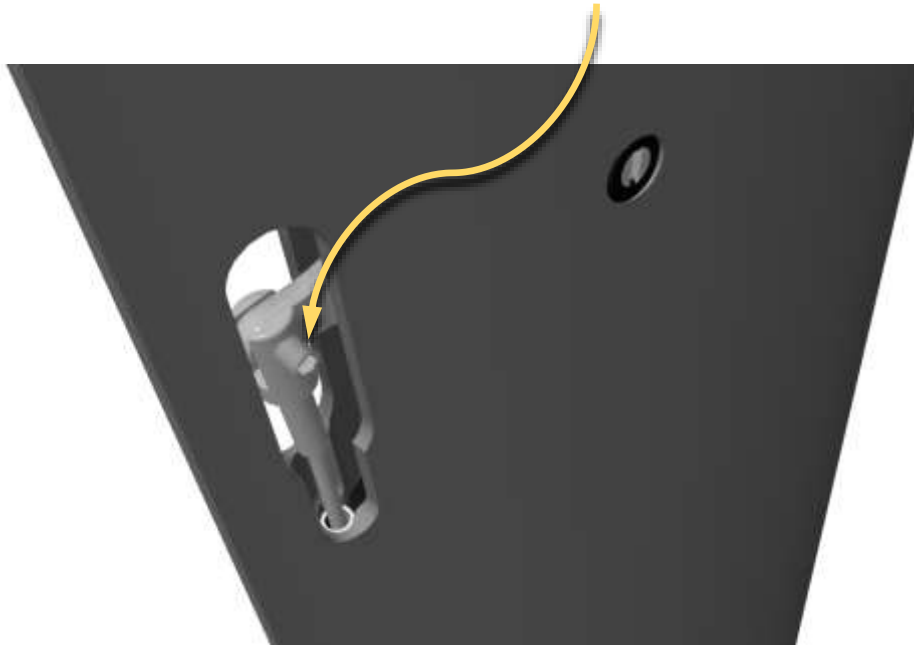
Boats # affected: N/A

Boats already upgraded: N/A

Severity: N/A

Pack # to choose: Grub Screw is included in pack **#1**. (But may need WZFFPRTT Top terminator)

When assembling the front foil, it is easy to lose or damage the grub screw. We are updating our instructions to show a way to assemble without removing this. See video [Front Foil Disassembly](#). If you do remove the grub screw, don't use force to put it back in as both parts have threads it needs care to line up.



Sail wear points

Boats # affected: 2000 - random

Boats already upgraded: N/A

Severity: **Low**

Part numbers to choose: We will send reinforcing tape.

Early sails did not have tape along the bottom of the Mainsheet / Outhaul pocket and can start to deteriorate over time. The pack has a strip of tape for this and also a square of tape that can be put on the sail where the centreboard rubs on the sail.



Front Foil Barrel Nut failure

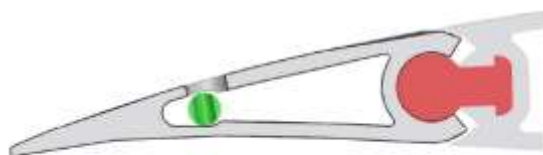
Boats # affected: 2000 - ~2350

Boats already upgraded: 70

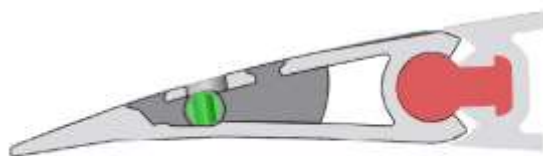
Severity: **High**

Pack # number: N/A

The barrel nut is a small metal part inside the front foil flap that connects the pushrod to the flap. The design is the same as what had been used successfully in the Mach2 for many years. We discovered that the openness of the aluminium section used in the WASZP allowed the barrel nut to bend and sometimes break, resulting in the pushrod pushing through the bottom of the flap. There have been two stages of addressing this problem: The first was to inject the area with glue to encapsulate the barrel nut, the second stage, coming online now, has been to create a new extrusion die for the flap that encapsulates the barrel nut completely. This new section has been coupled with rethinking the tip attachment so they can be removed and replaced more easily. It also allows replacement of the barrel nut. If your foil does not have two injection holes near the barrel nut or screw holes near the tips that signify the tips are removable, then the barrel nut has a possibility of failing.



Section Through Original Flap



Section Through Flap
After Spabond Injection

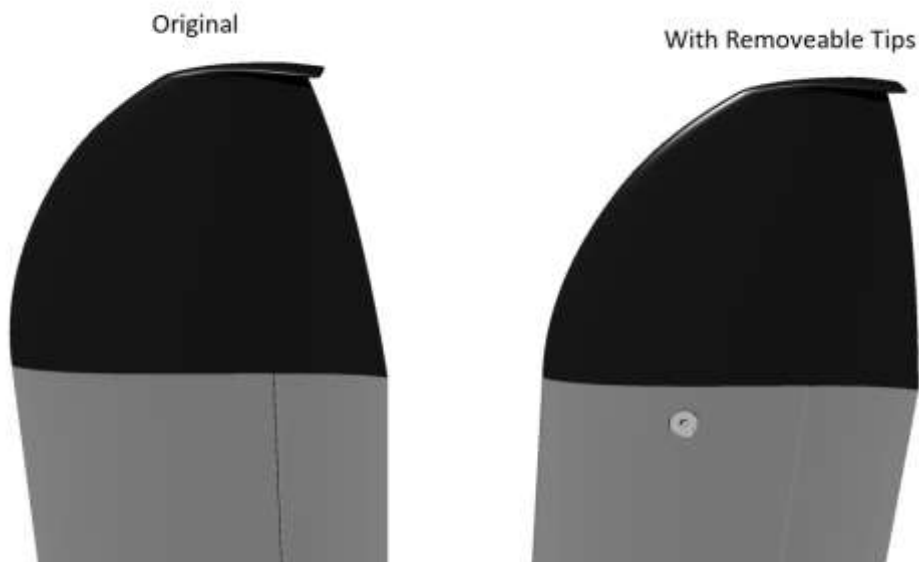


Section Through New Flap





Image showing additional holes to inject spabond.



What to do:

1. Leave it. If it fails we will repair or replace. We extend the warranty on this part to 3 years.
or
2. Receive an AU\$50 credit on the web store if you inject the foil yourself. (Upload a pic of the injected glue, before trimming, in a warranty claim). Video: [Barrel Nut Injection](#)
or
3. Buy the new specification foil for 40% off for a limited time.
or
4. Not practical for the majority of locations – to get the foil back to our main offices for injection (Melbourne Australia or Lugano Switzerland. More options may come available).



What to do now :

If you got this email, we assume you have a login to the Waszp webshop and your boat is linked to it:

1. Log in at <https://www.kasail.com/waszp>
 - a. If forgotten, request new password
 - b. If no account, request an account
 - c. You can check if your boat is registered on your account:
<https://www.kasail.com/waszp/account/your-boat>
 - d. If your boat is not there, you can request to transfer it:
<https://www.kasail.com/waszp/incident/claim-ownership>
2. Pick the items you need at <https://www.kasail.com/waszp/product/Upgrades>
ONE PACK PER BOAT and ONLY WHAT YOU NEED
3. Add any other items you would like included freight free (less than 2m long, which excludes sails, masts and booms)
4. Checkout the cart <https://www.kasail.com/waszp/cart/checkout>
 - a. Select Shipping Option to 'Upgrade' for the free shipping.
5. If no extra items, just confirm and we will ship your selection.
6. If there are extra items that you believe should be free (i.e. replacement for bent wing bar) please select 'Submit to KA' and we will review the cart and adjust.
7. For normal extra items, payment options (Card/PayPal/EFT) will appear at bottom.

What happens next:

- We will despatch your order by mid-December for southern hemisphere / end January for northern hemisphere or within 3 weeks of you submitting your cart. (subject to demand)
- Hopefully there will be no duty to pay, if there is, please let us know and we will add a credit to your account.
- Undertake the upgrades – please refer to the videos as you progress
- If you have questions after watching the videos, checkout www.upgrades.waszp.com/faq If nothing there, email upgrades@waszp.com to add your question.
- If none of the above options work, feel free to contact me on skype: andrew.mcdougall or via Facebook messenger: andrew.g.mcdougall

To acknowledge your efforts working with us on these upgrades, we have compiled a complimentary spares kit, as listed on the next page.

All the very best
Andrew McDougall
KA Sail Australia
11 / 91-95 Tulip St
Cheltenham VIC 3192
Office +61 3 9585 3585
Mobile +61 425 76 4050
Skype andrew.mcdougall
www.mach2boats.com
www.waszp.com



Pack Name	Pack #	Qty in Pack	Item Number	Item Name
Included Upgrades	1	2	BO6x35SH	M6 35mm Gantry Bolt
		2	BOW6	M6 Washer for Gantry Bolt
		2	BO5WL	M5 Washer 316SS Large - Mainsheet block
		1	WZWLM	Wand Limiter Mount
		0.43m	ROB3	3mm x 43cm Bungee - Wand Limiter
		1		Mark cloth 2m x 5cm - Sail Bottom Reo
		1		Mark cloth 15cm x 15cm Sail C/B wear patch
Control Update	2	1	WZCPRFE	Push Rod - Hull - Front End
		1	BO5N	M5 Nut
		1	WZCPR	Push Rod - Hull
		1	WZCPRRE	Push Rod - Hull - Rear End
		1	WZCWCA	Wand Control Assembly
Wing Sleeves	3	1	WZWTSFL2	Wing Tube Sleeve Front Left V2
		1	WZWTSFR2	Wing Tube Sleeve Front Right V2
		2	WZWTSR2	Wing Tube Sleeve Rear V2
RHA Barrel update	4	1	WZCRHA1	RHA Barrel V2
		1	WZCRHA2	RHA Front Connector V2
RHA Socket update	5	1	WZCWCAV1	Ball Joint Socket threaded rod
Bolt Rope Track	6	10	WZHSBTS	Single Block Spacer
		10	BO4x30CSP	M4 x 30mm Countersunk Bolt
		1		M4 Tap
		1		3.2 mm drill

Spares

Complimentary Spares	1	1	BO1-4x10P	1/4"-20 Plastic Bolt (Bung)
		1	BO3x6GS	M3x6mm Grub Screw
		1	BO3x8RHP	M3x8mm Round Head Bolt Phillip
		1	M2FFRP	Foil Retaining Pin
		1	WZFB	WASZP foil joiner bolt
		1	WZHBREEF	Bolt rope end stopper front
		1	WZWSMP	Wing support lower pin
		1	WZWSUP	Wing support upper pin